

# Module 5 LO1

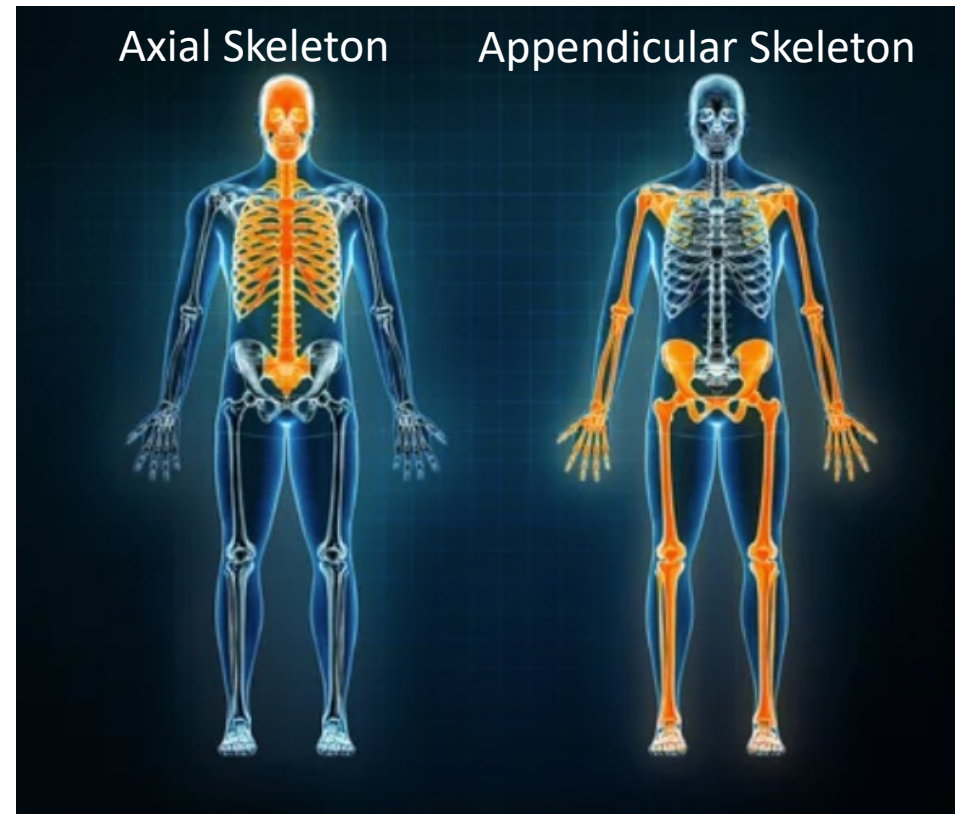
## Divisions of Skeletal System

Dr. Lisa Brinn

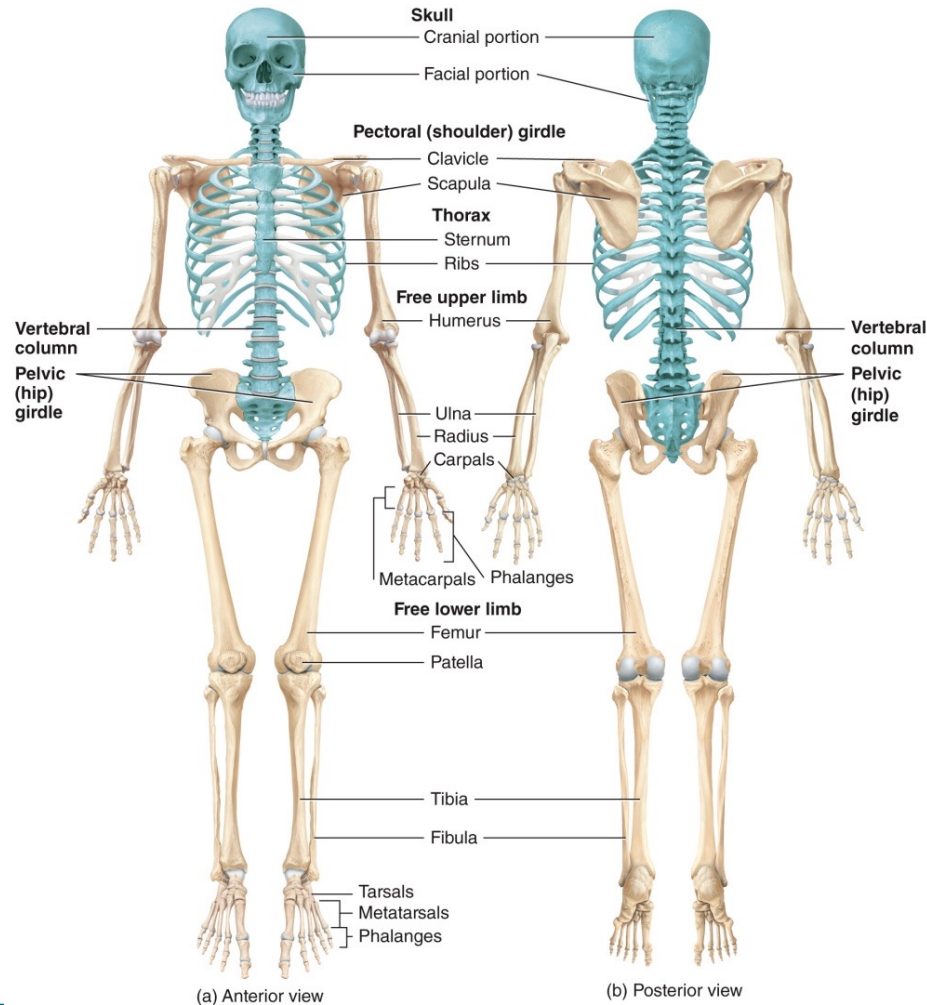
[lbrinn@fiu.edu](mailto:lbrinn@fiu.edu)

# Bones of the Adult Skeleton

- 206 named bones make up the adult skeleton.
- Bones are grouped into two divisions:
  - Axial skeleton
  - Appendicular skeleton



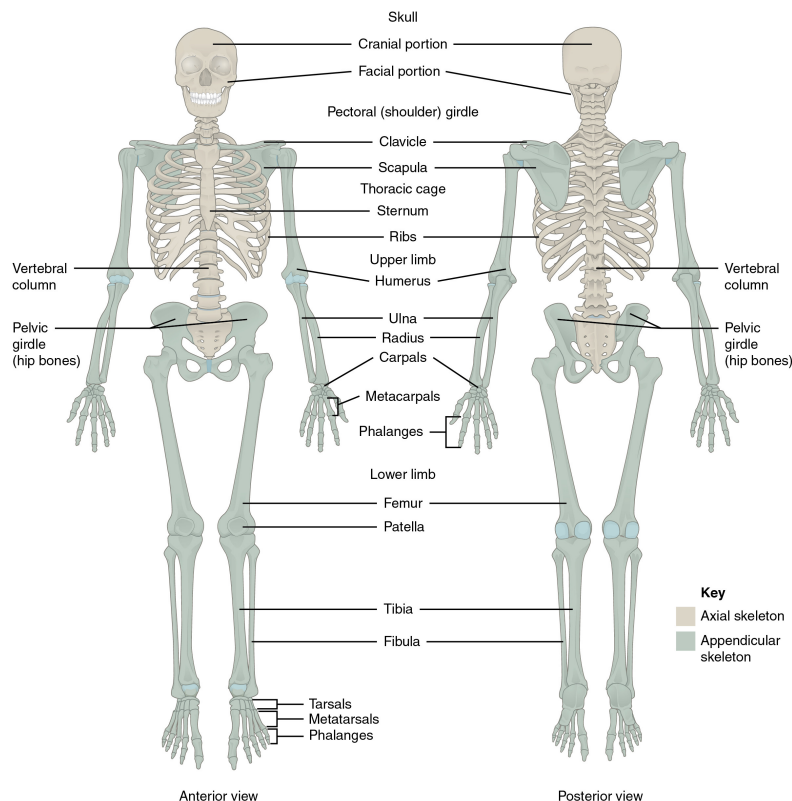
# 1. Divisions of the Skeletal System



# Bones of the Adult Skeletal System

## Axial Division of Skeletal System

Structure	Number of Bones
Skull	
• Cranial	8
• Facial	14
Hyoid bone	1
Auditory ossicles	6
Vertebral column	26
Thorax	
• Sternum	1
• Ribs	24
Total	80



## Appendicular Division of Skeletal System

Structure	Number of Bones
Upper limbs	
• Pectoral (shoulder) girdles	
• Clavicle	2
• Scapula	2
Free upper limbs	
• Humerus	2
• Ulna	2
• Radius	2
• Carpals	16
• Metacarpals	10
• Phalanges	28
Lower limbs	
• Pelvic (hip) girdles	
• Hip, pelvic or coxal bone	2
Free lower limbs	
• Femur	2
• Patella	2
• Tibia	2
• Fibula	2
• Tarsals	14
• Metatarsals	10
• Phalanges	28
Number of appendicular bones	126
Total number of bones	206